



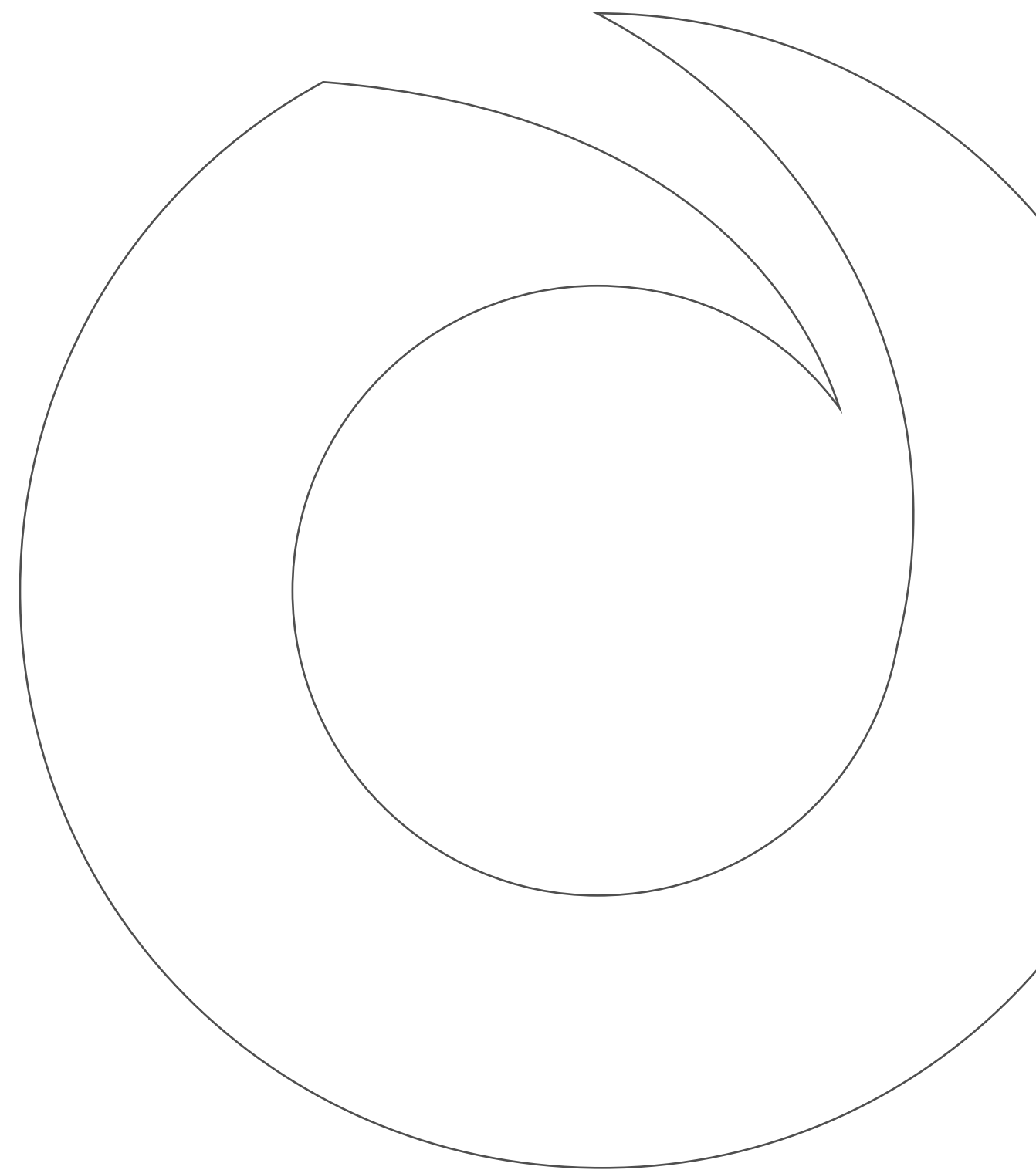
ENSO AMBER



Developer of Empowering Environments

ENSO's projects are more than just new residences. They are true oases of tranquility, harmony, and rejuvenation for their owners. Our homes offer spaces that are aesthetically pleasing for both body and soul. Inspired by nature, the ideal architect, we combine cutting-edge technology, contemporary comfort, and natural materials to maintain a connection with the surrounding world, even amid a big city chaos. The ENSO team meticulously designs each home, ensuring top quality and impeccable attention to details.

Discover a living space filled with comfort and inspiration.



Rooted in the glow for your treasured way of life.

ENSO AMBER is a unique project in the upscale Jumeirah Garden City area, seamlessly blending delight with meticulous design. This project features a range of living options, from elegant one-bedroom units to opulent three-bedroom suites, all full of natural light, expansive spaces, and breathtaking views.

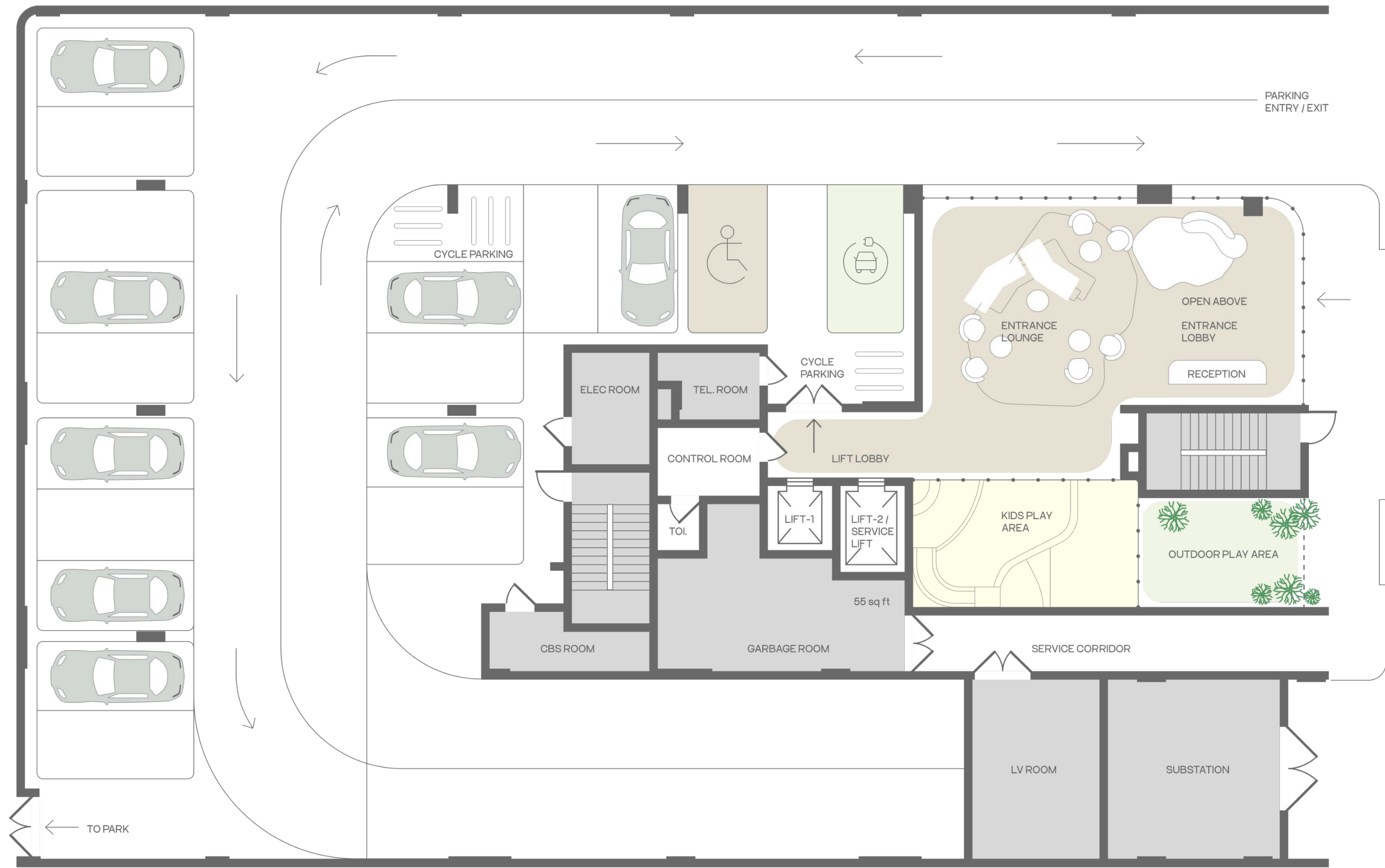
ENSO AMBER transcends mere luxury — it opens a pathway to a refined lifestyle where comfort and aesthetic appeal coexist in harmony, offering an experience of a new standard of living.

Embrace a living space lit up with comfort and inspiration.



FLOOR PLAN

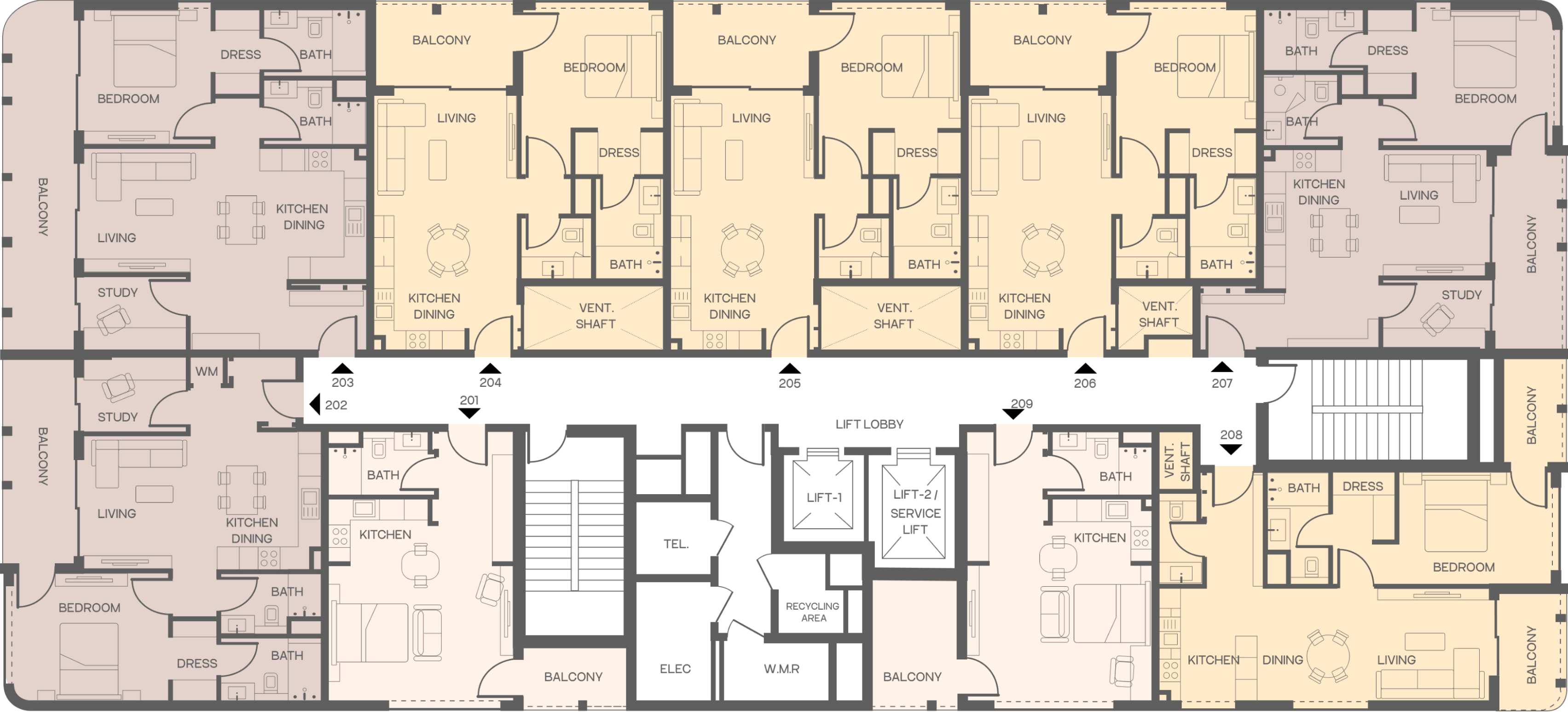
FLOOR: GROUND



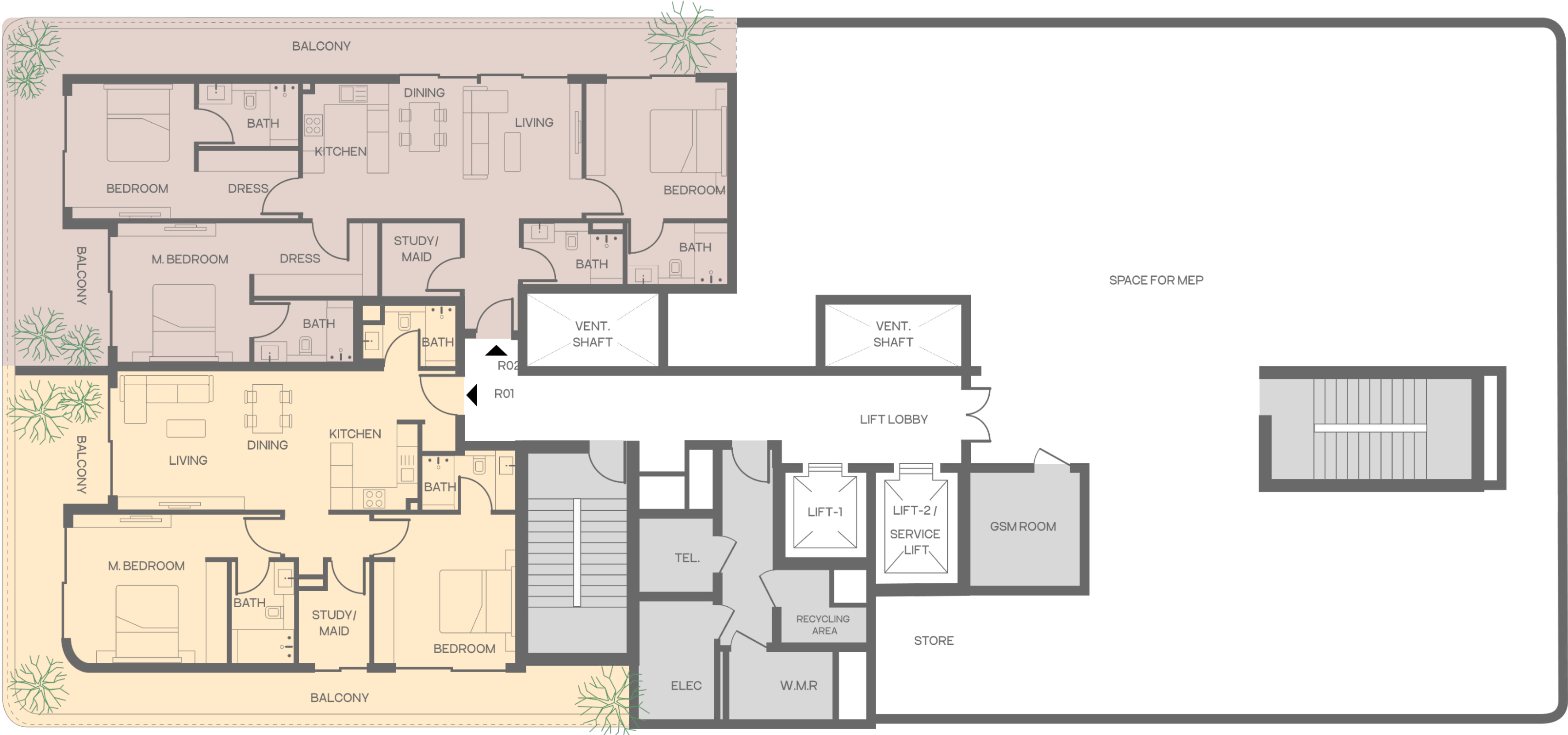
FLOOR: FIRST



FLOOR: TYPICAL



FLOOR: ROOF



EMBRACE A LIVING SPACE
ALIVE WITH COMFORT AND
INSPIRATION



Grand Studio Home



DISCLAIMER

The information, dimensions, areas, unit plans, floor plans, images, and orientations of the units/floors are for reference and demonstrative purposes only and not to scale. The developer reserves the right to revise, alter, modify, and/or change these details at their absolute discretion and without thereby incurring any liability whatsoever.



Studio 1 Bath - Type S1

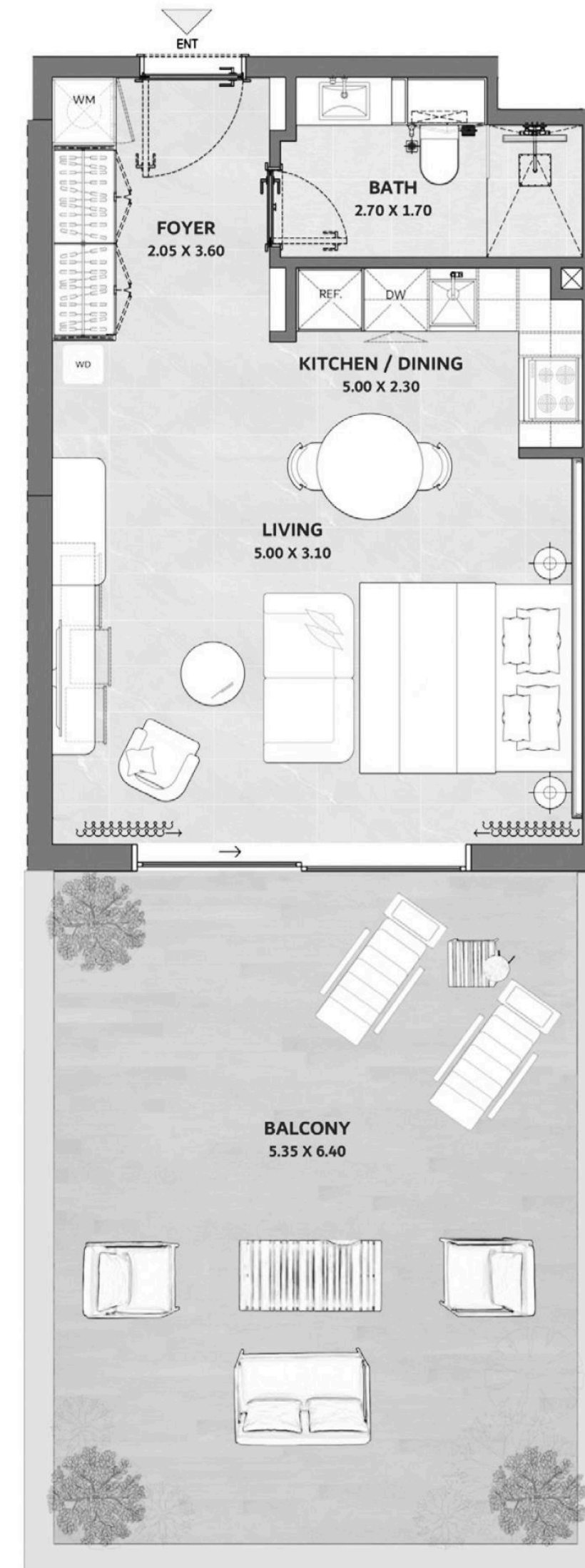
SUITE AREA	38.75 Sqm	417 Sft
BALCONY AREA	34.94 Sqm	376 Sft
TOTAL AREA	73.68 Sqm	793 Sft

FIRST FLOOR PLAN



UNIT NUMBER

106



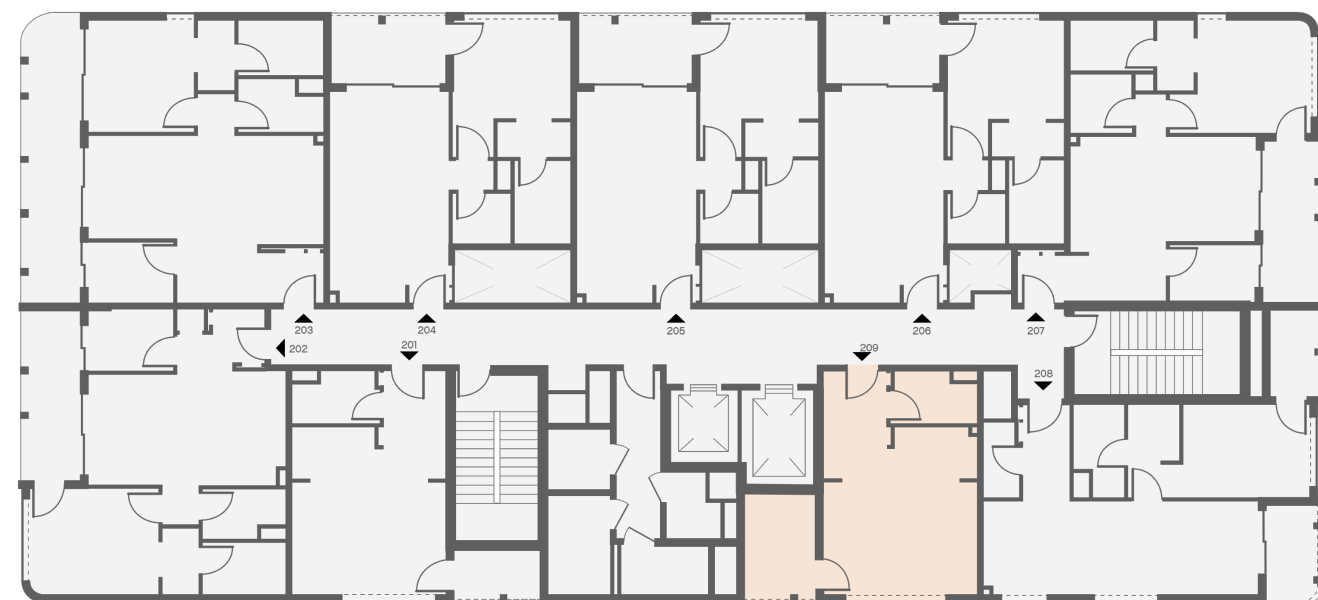
DISCLAIMER

The information, dimensions, areas, unit plans, floor plans, images, and orientations of the units/floors are for reference and demonstrative purposes only and not to scale. The developer reserves the right to revise, alter, modify, and/or change these details at their absolute discretion and without thereby incurring any liability whatsoever.

Studio 1 Bath - Type S2

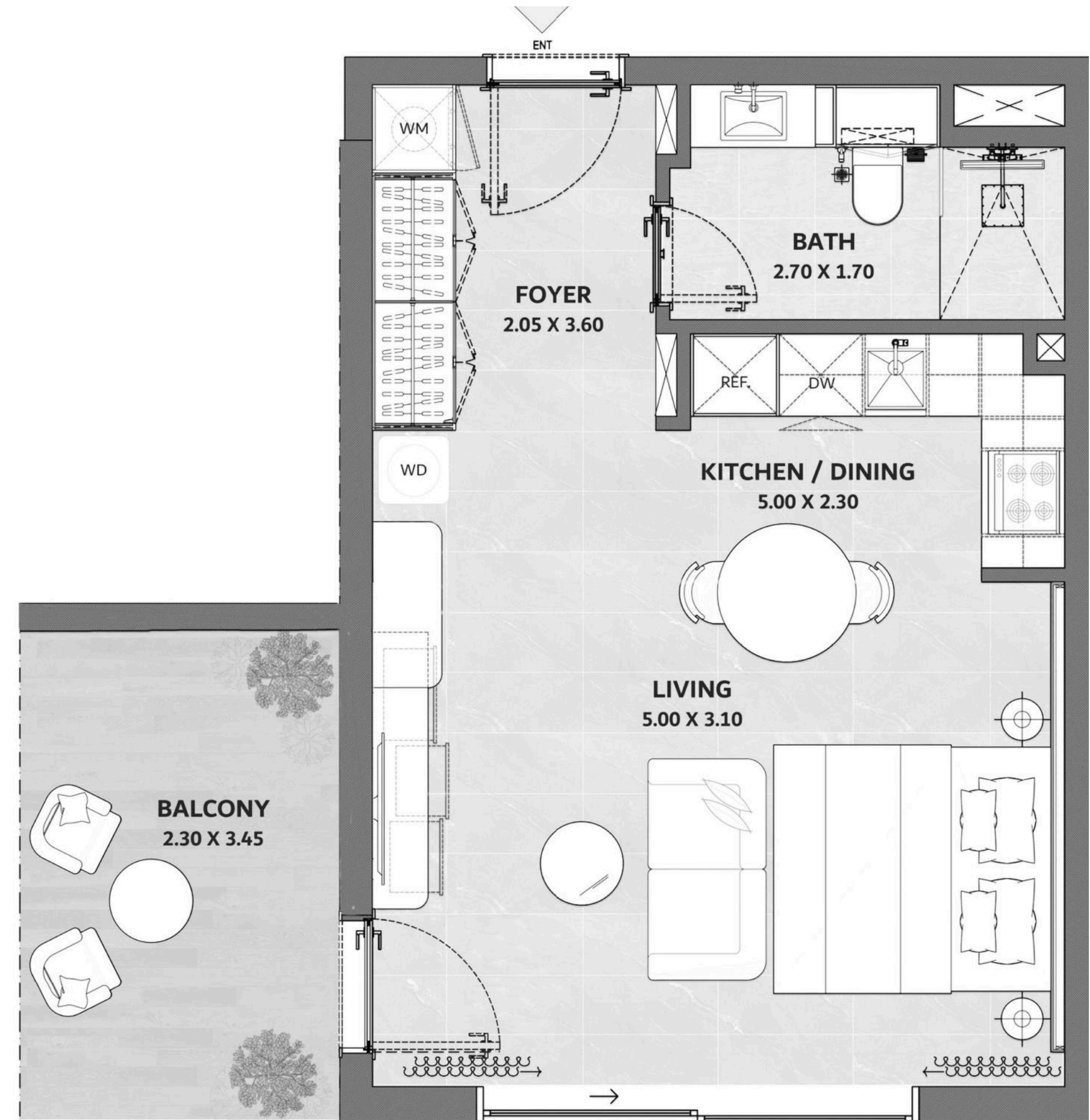
SUITE AREA	38.75 Sqm	417 Sft
BALCONY AREA	9.20 Sqm	99 Sft
TOTAL AREA	47.94 Sqm	516 Sft

TYPICAL FLOOR PLAN



UNIT NUMBERS

- 209 | 309 |
- 409 | 509 |
- 609 | 709 |
- 809 |



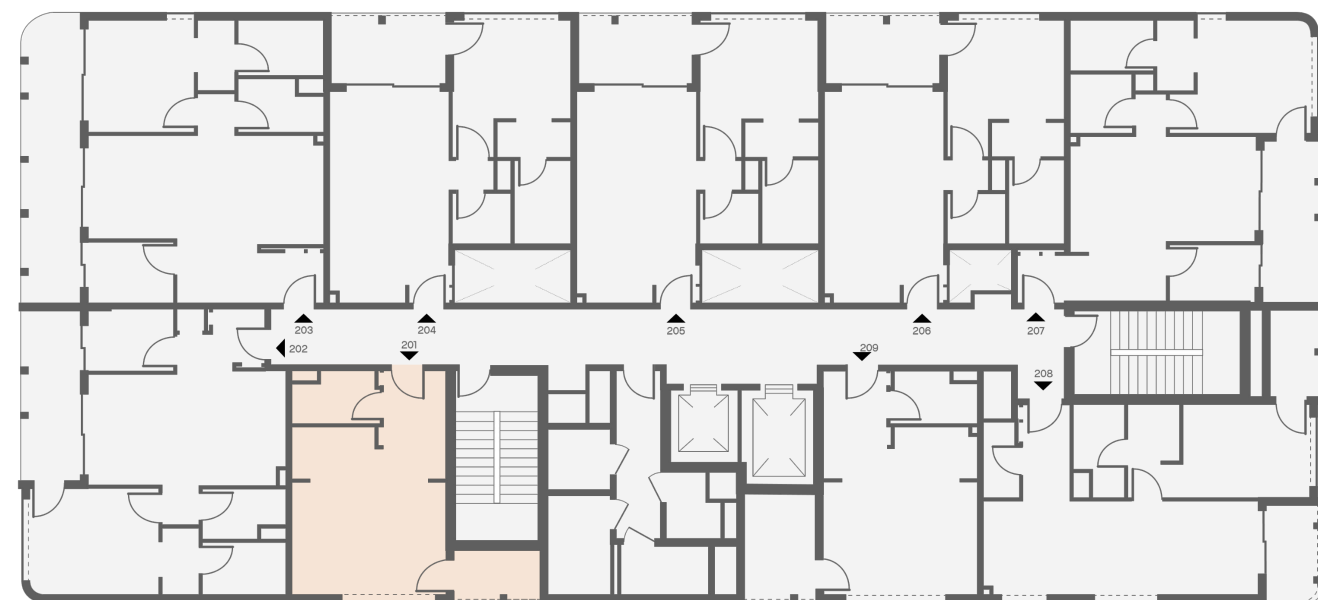
DISCLAIMER

The information, dimensions, areas, unit plans, floor plans, images, and orientations of the units/floors are for reference and demonstrative purposes only and not to scale. The developer reserves the right to revise, alter, modify, and/or change these details at their absolute discretion and without thereby incurring any liability whatsoever.

Studio 1 Bath - Type S3

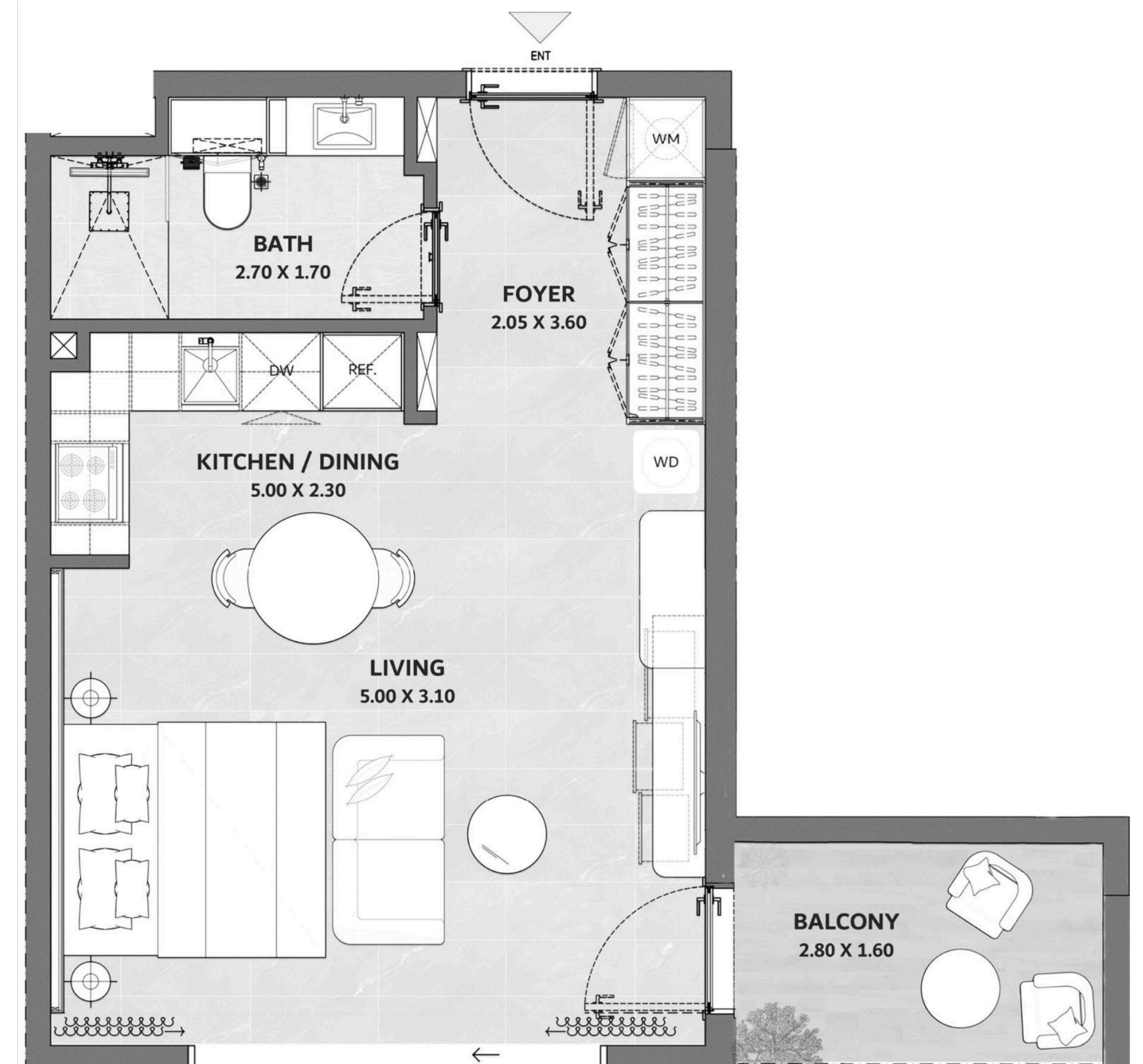
SUITE AREA	38.75 Sqm	417 Sft
BALCONY AREA	5.30 Sqm	57 Sft
TOTAL AREA	44.04 Sqm	474 Sft

TYPICAL FLOOR PLAN



UNIT NUMBERS

201 | 301 |
401 | 501 |
601 | 701 |
801 |



DISCLAIMER

The information, dimensions, areas, unit plans, floor plans, images, and orientations of the units/floors are for reference and demonstrative purposes only and not to scale. The developer reserves the right to revise, alter, modify, and/or change these details at their absolute discretion and without thereby incurring any liability whatsoever.

1 Bedroom 1.5 Bath



DISCLAIMER

The information, dimensions, areas, unit plans, floor plans, images, and orientations of the units/floors are for reference and demonstrative purposes only and not to scale. The developer reserves the right to revise, alter, modify, and/or change these details at their absolute discretion and without thereby incurring any liability whatsoever.



1 Bedroom 1.5 Bath - Type B1

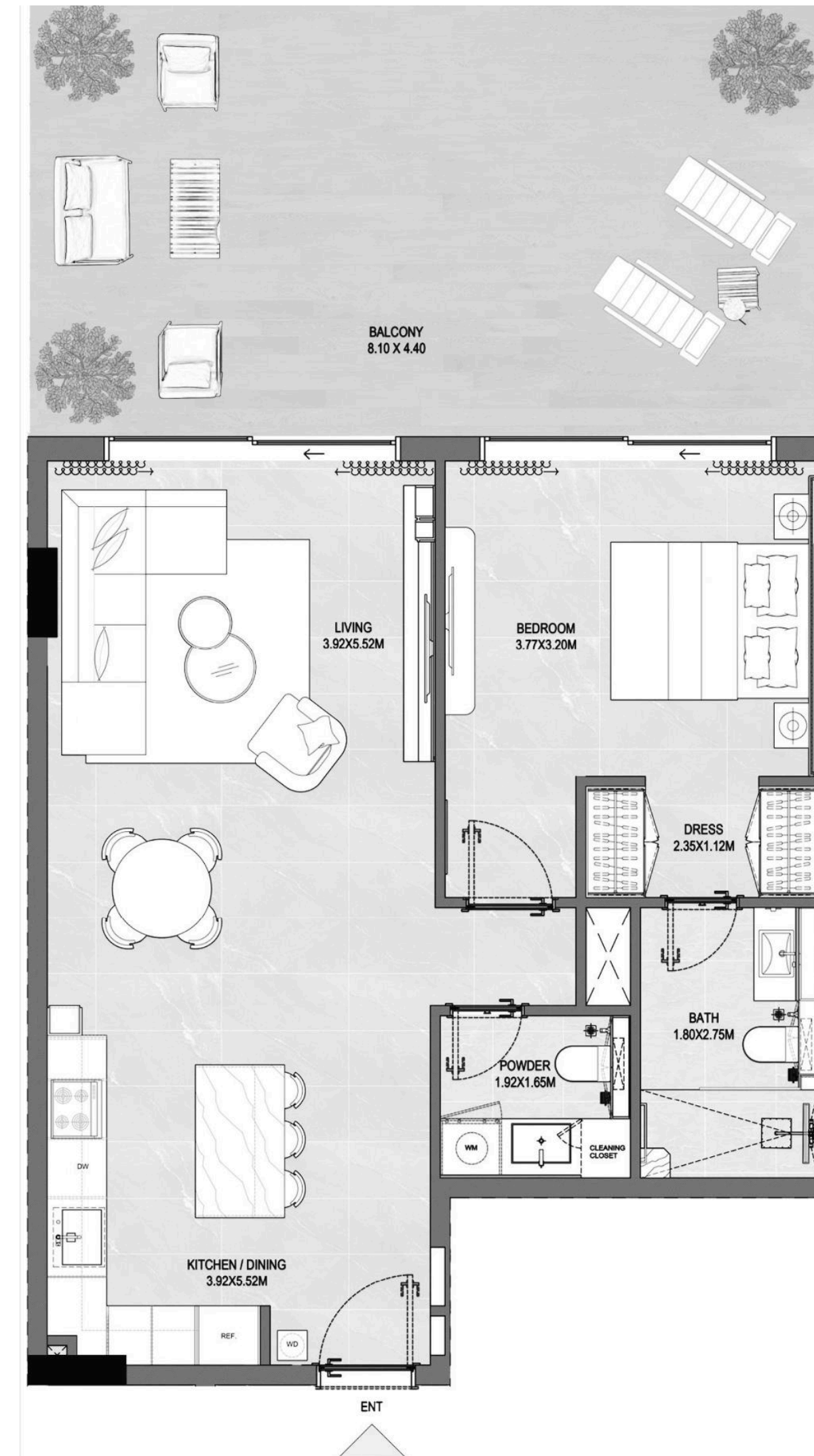
SUITE AREA	67.17 Sqm	723 Sft
BALCONY AREA	37.82 Sqm	407 Sft
TOTAL AREA	104.99 Sqm	1130 Sft

FIRST FLOOR PLAN



UNIT NUMBERS

101 | 102 | 103



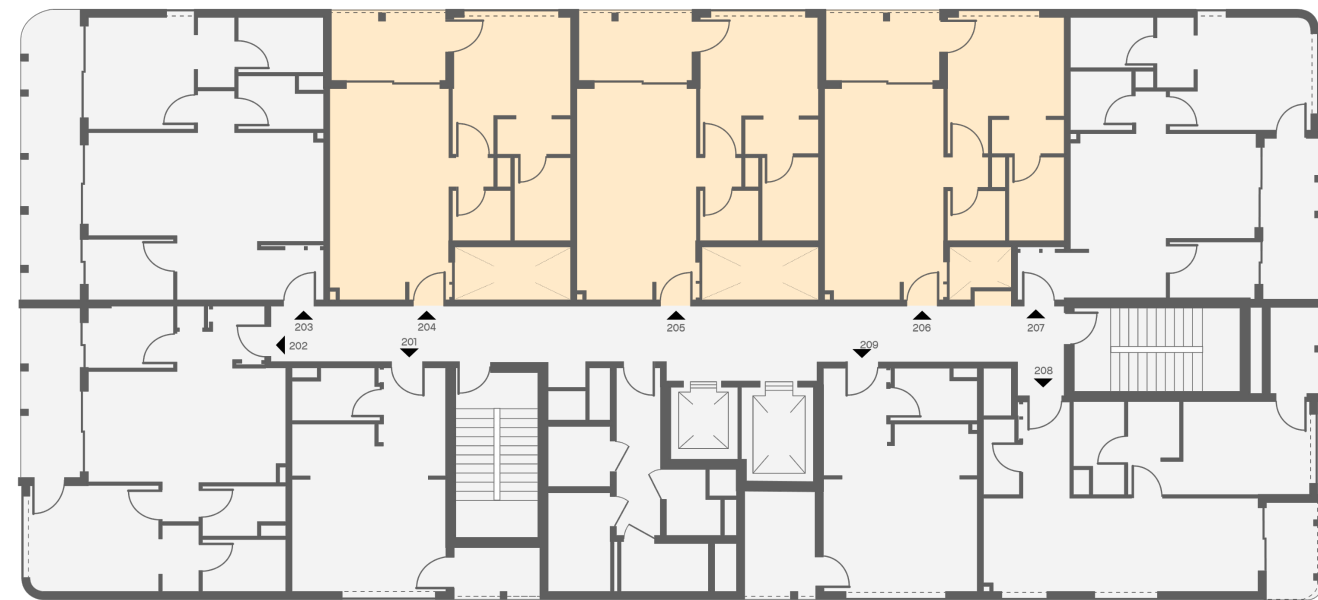
DISCLAIMER

The information, dimensions, areas, unit plans, floor plans, images, and orientations of the units/floors are for reference and demonstrative purposes only and not to scale. The developer reserves the right to revise, alter, modify, and/or change these details at their absolute discretion and without thereby incurring any liability whatsoever.

1 Bedroom 1.5 Bath - Type B2

SUITE AREA	57.98 Sqm	624 Sft
BALCONY AREA	9.11 Sqm	98 Sft
TOTAL AREA	67.08 Sqm	722 Sft

TYPICAL FLOOR PLAN



UNIT NUMBERS

- 204 | 205 | 206 |
- 304 | 305 | 306 |
- 404 | 405 | 406 |
- 504 | 505 | 506 |
- 604 | 605 | 606 |
- 704 | 705 | 706 |
- 804 | 805 | 806 |



DISCLAIMER

The information, dimensions, areas, unit plans, floor plans, images, and orientations of the units/floors are for reference and demonstrative purposes only and not to scale. The developer reserves the right to revise, alter, modify, and/or change these details at their absolute discretion and without thereby incurring any liability whatsoever.

1 Bedroom 1.5 Bath



DISCLAIMER

The information, dimensions, areas, unit plans, floor plans, images, and orientations of the units/floors are for reference and demonstrative purposes only and not to scale. The developer reserves the right to revise, alter, modify, and/or change these details at their absolute discretion and without thereby incurring any liability whatsoever.



1 Bedroom 1.5 Bath - Type B3

SUITE AREA	62.81 Sqm	676 Sft
BALCONY AREA	70.70 Sqm	761 Sft
TOTAL AREA	133.51 Sqm	1437 Sft

FIRST FLOOR PLAN

UNIT NUMBER

105



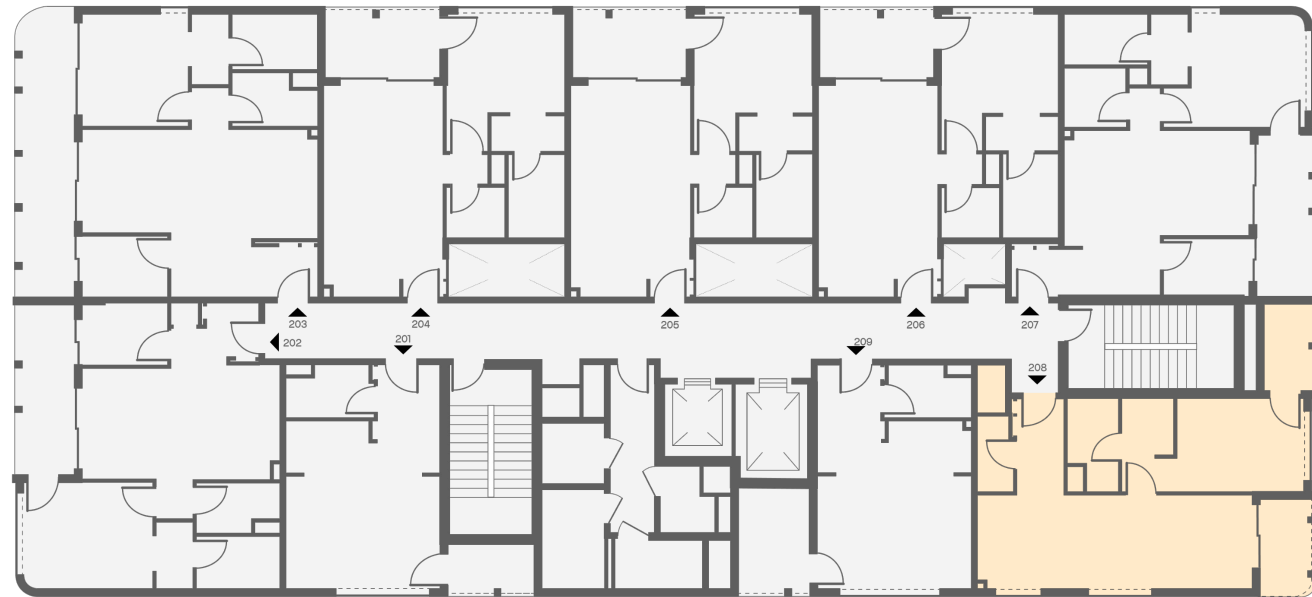
DISCLAIMER

The information, dimensions, areas, unit plans, floor plans, images, and orientations of the units/floors are for reference and demonstrative purposes only and not to scale. The developer reserves the right to revise, alter, modify, and/or change these details at their absolute discretion and without thereby incurring any liability whatsoever.

1 Bedroom 1.5 Bath - Type B4

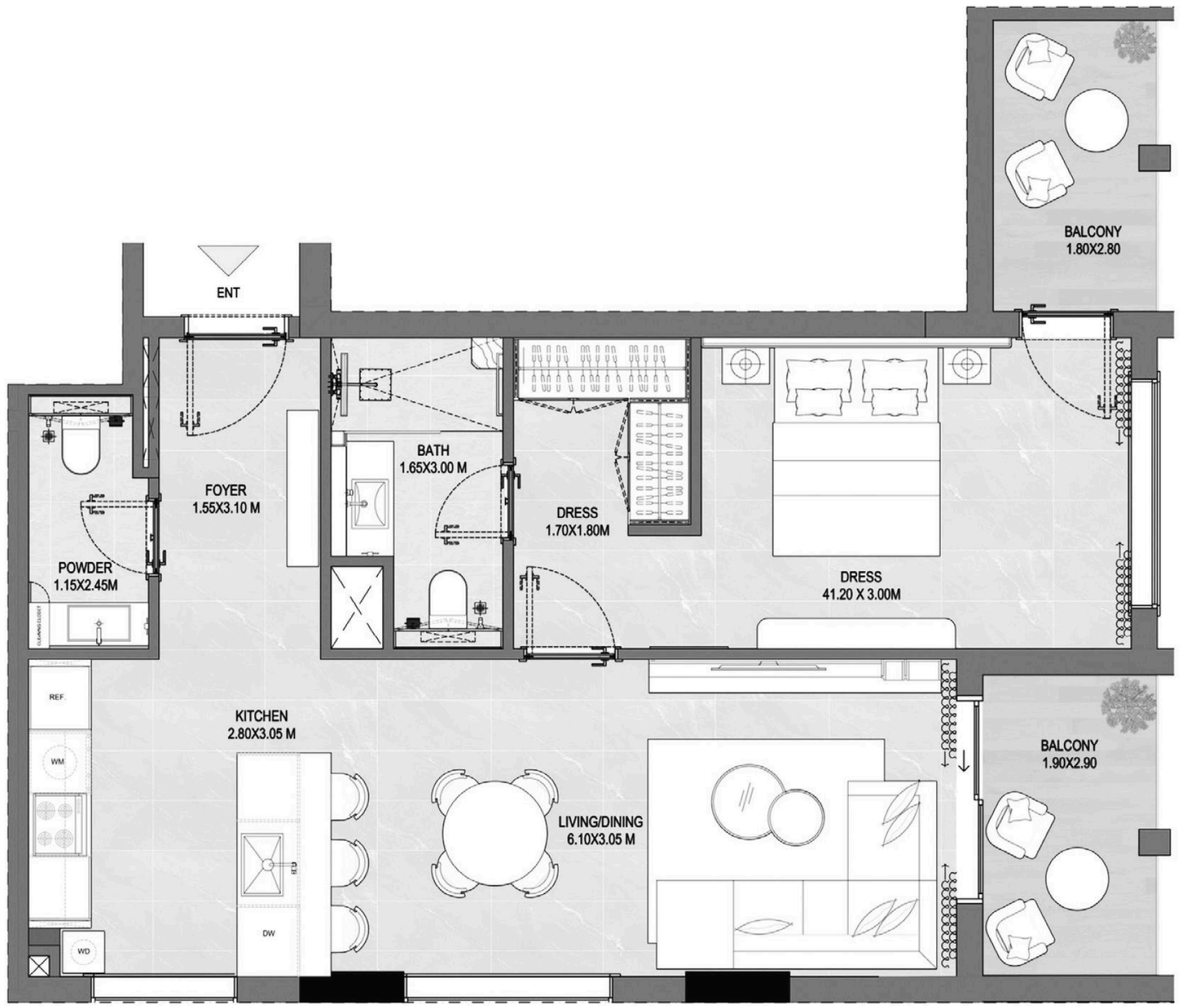
SUITE AREA	62.81 Sqm	676 Sft
BALCONY AREA	11.06 Sqm	119 Sft
TOTAL AREA	73.86 Sqm	795 Sft

TYPICAL FLOOR PLAN



UNIT NUMBERS

- 208 | 308 |
- 408 | 508 |
- 608 | 708 |
- 808 |



DISCLAIMER

The information, dimensions, areas, unit plans, floor plans, images, and orientations of the units/floors are for reference and demonstrative purposes only and not to scale. The developer reserves the right to revise, alter, modify, and/or change these details at their absolute discretion and without thereby incurring any liability whatsoever.

1 Bedroom & Study 2 Bath



DISCLAIMER

The information, dimensions, areas, unit plans, floor plans, images, and orientations of the units/floors are for reference and demonstrative purposes only and not to scale. The developer reserves the right to revise, alter, modify, and/or change these details at their absolute discretion and without thereby incurring any liability whatsoever.



1 Bedroom & Study 2 Bath - Type 1B + S1

SUITE AREA	68.20 Sqm	734 Sft
BALCONY AREA	10.60 Sqm	114 Sft
TOTAL AREA	78.79 Sqm	848 Sft

FIRST FLOOR PLAN



TYPICAL FLOOR PLAN



UNIT NUMBERS

104 | 207 | 307 | 407 | 507 | 607 | 707 | 807



1 Bedroom & Study 2 Bath - Type 1B + S2

SUITE AREA	67.82 Sqm	730 Sft
BALCONY AREA	12.08 Sqm	130 Sft
TOTAL AREA	79.90 Sqm	860 Sft

TYPICAL FLOOR PLAN



UNIT NUMBERS

202 | 302 |
 402 | 502 |
 602 | 702 |
 802 |



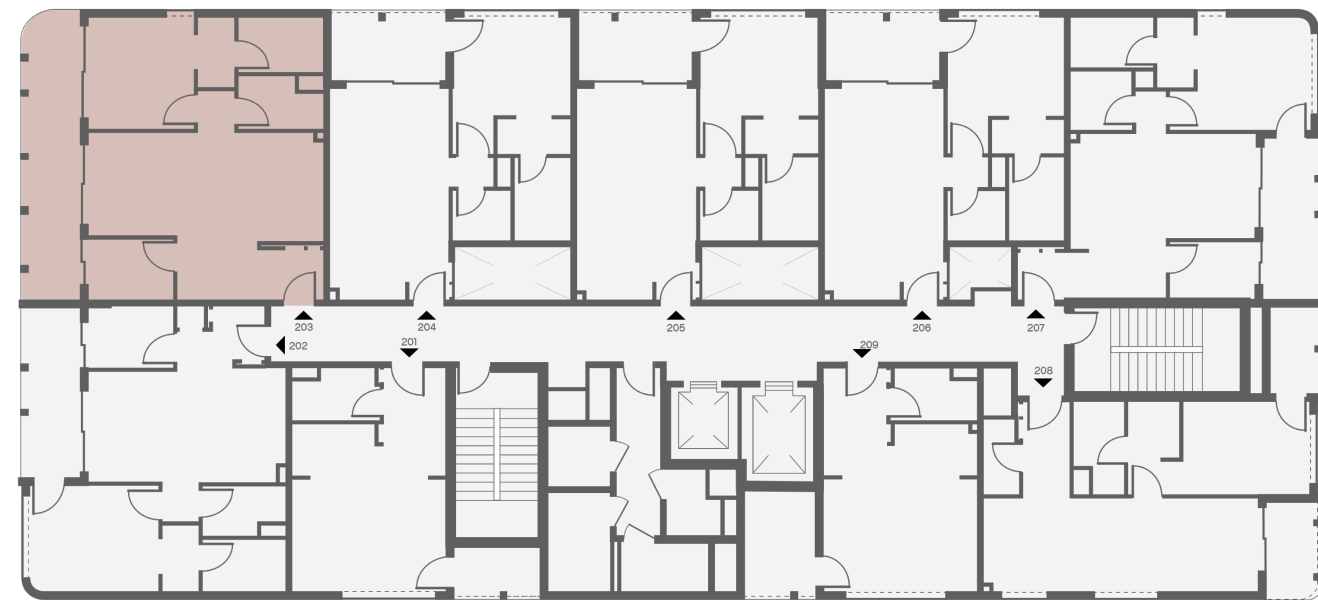
DISCLAIMER

The information, dimensions, areas, unit plans, floor plans, images, and orientations of the units/floors are for reference and demonstrative purposes only and not to scale. The developer reserves the right to revise, alter, modify, and/or change these details at their absolute discretion and without thereby incurring any liability whatsoever.

1 Bedroom & Study 2 Bath - Type 1B + S3

SUITE AREA	72.84 Sqm	784 Sft
BALCONY AREA	19.79 Sqm	213 Sft
TOTAL AREA	92.63 Sqm	997 Sft

TYPICAL FLOOR PLAN



UNIT NUMBERS

- 203 | 303 |
- 403 | 503 |
- 603 | 703 |
- 803 |



DISCLAIMER

The information, dimensions, areas, unit plans, floor plans, images, and orientations of the units/floors are for reference and demonstrative purposes only and not to scale. The developer reserves the right to revise, alter, modify, and/or change these details at their absolute discretion and without thereby incurring any liability whatsoever.

2 Bedroom & Maid 3 Bath



DISCLAIMER

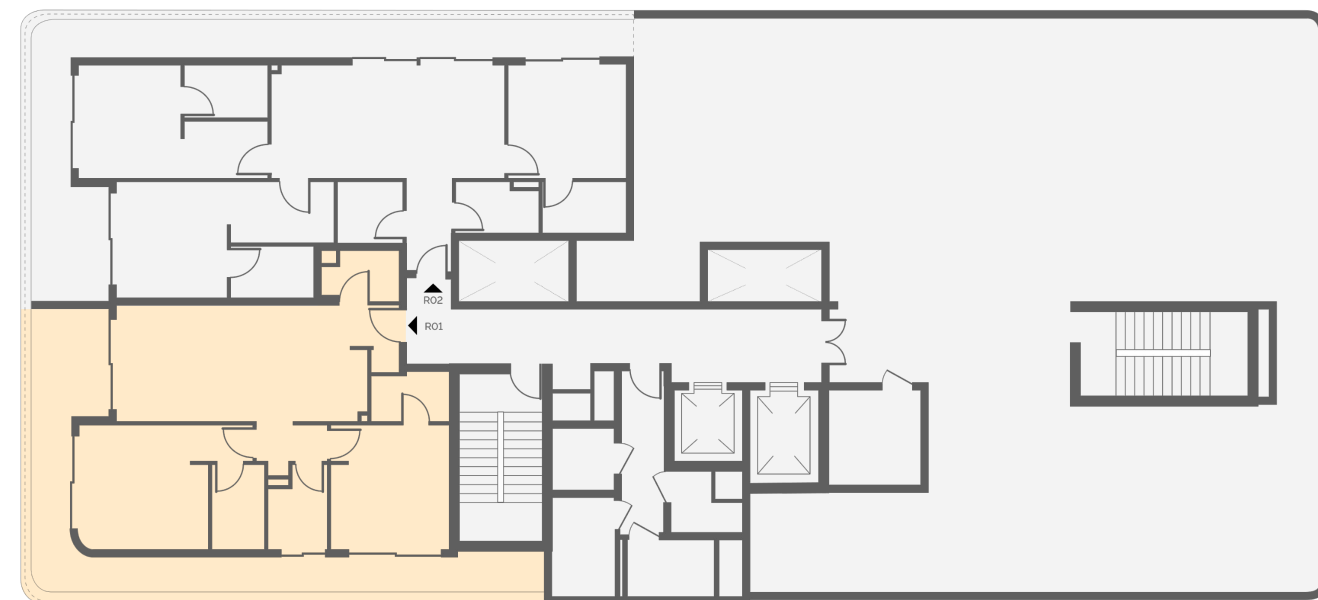
The information, dimensions, areas, unit plans, floor plans, images, and orientations of the units/floors are for reference and demonstrative purposes only and not to scale. The developer reserves the right to revise, alter, modify, and/or change these details at their absolute discretion and without thereby incurring any liability whatsoever.



2 Bedroom & Maid 3 Bath - Type 2B + S

SUITE AREA	97.55 Sqm	1050 Sft
BALCONY AREA	40.98 Sqm	441 Sft
TOTAL AREA	138.52 Sqm	1491 Sft

LOWER ROOF FLOOR PLAN



UNIT NUMBER

R01



DISCLAIMER

The information, dimensions, areas, unit plans, floor plans, images, and orientations of the units/floors are for reference and demonstrative purposes only and not to scale. The developer reserves the right to revise, alter, modify, and/or change these details at their absolute discretion and without thereby incurring any liability whatsoever.

2 Bedroom & Maid 4 Bath



DISCLAIMER

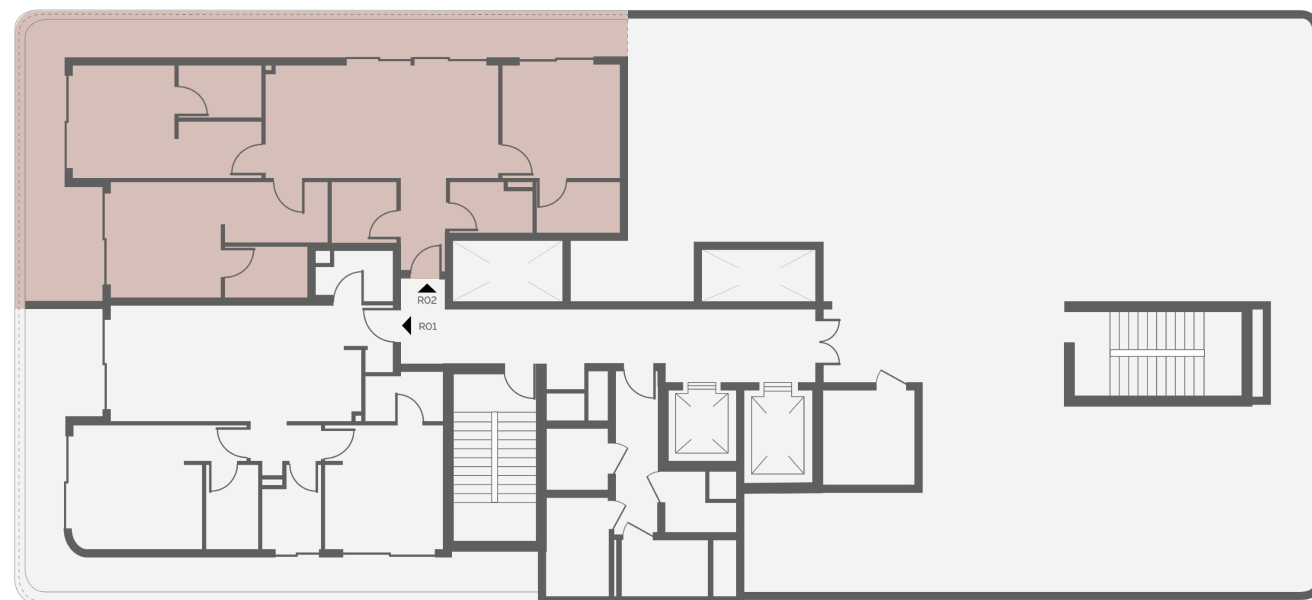
The information, dimensions, areas, unit plans, floor plans, images, and orientations of the units/floors are for reference and demonstrative purposes only and not to scale. The developer reserves the right to revise, alter, modify, and/or change these details at their absolute discretion and without thereby incurring any liability whatsoever.



3 Bedroom & Maid 4 Bath - Type 3B + S

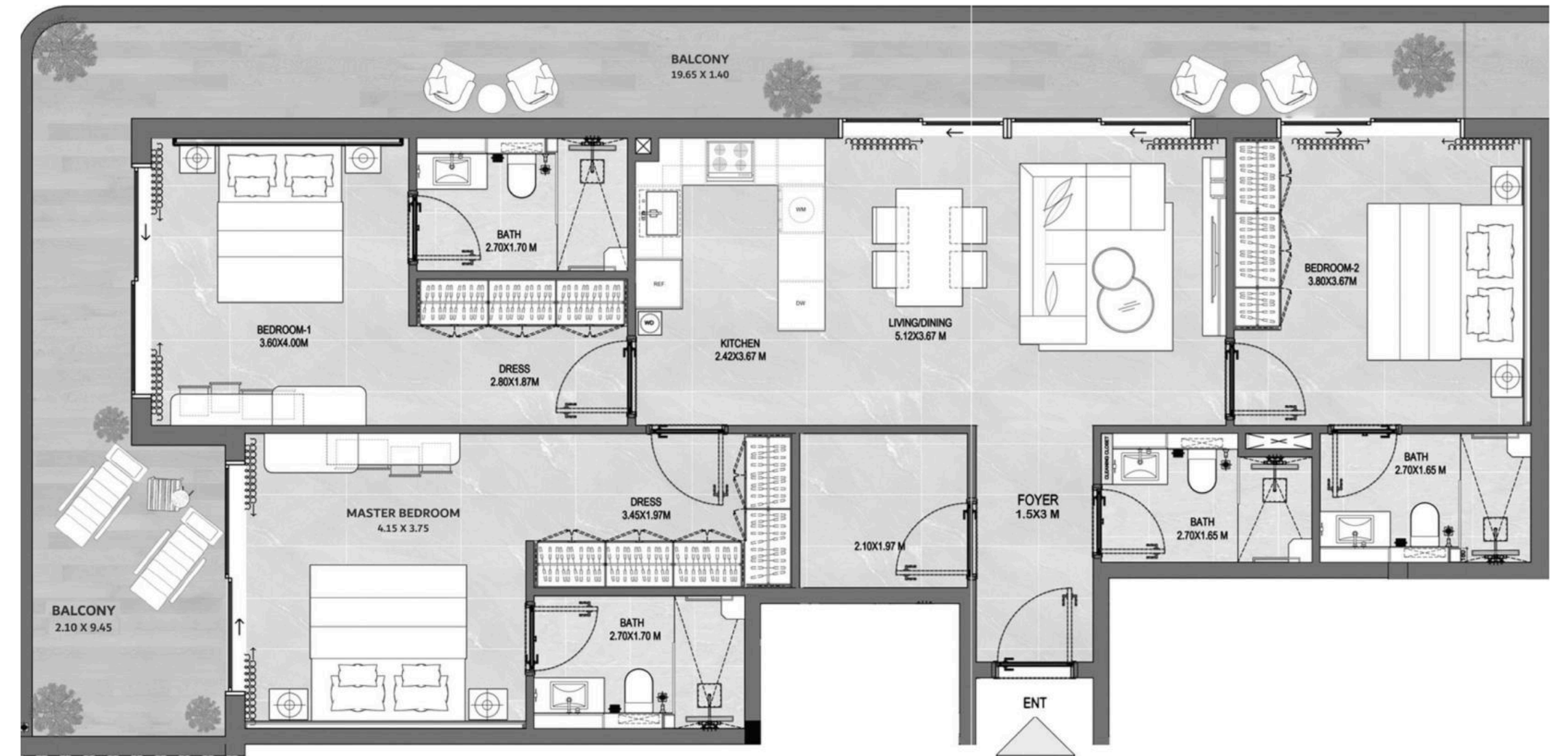
SUITE AREA	118.18 Sqm	1272 Sft
BALCONY AREA	45.62 Sqm	491 Sft
TOTAL AREA	163.79 Sqm	1763 Sft

LOWER ROOF FLOOR PLAN



UNIT NUMBER

R02













DISCLAIMER

The information, dimensions, areas, unit plans, floor plans, images, and orientations of the units/floors are for reference and demonstrative purposes only and not to scale. The developer reserves the right to revise, alter, modify, and/or change these details at their absolute discretion and without thereby incurring any liability whatsoever.

ROOTED IN THE GLOW FOR YOUR
TREASURED WAY OF LIFE



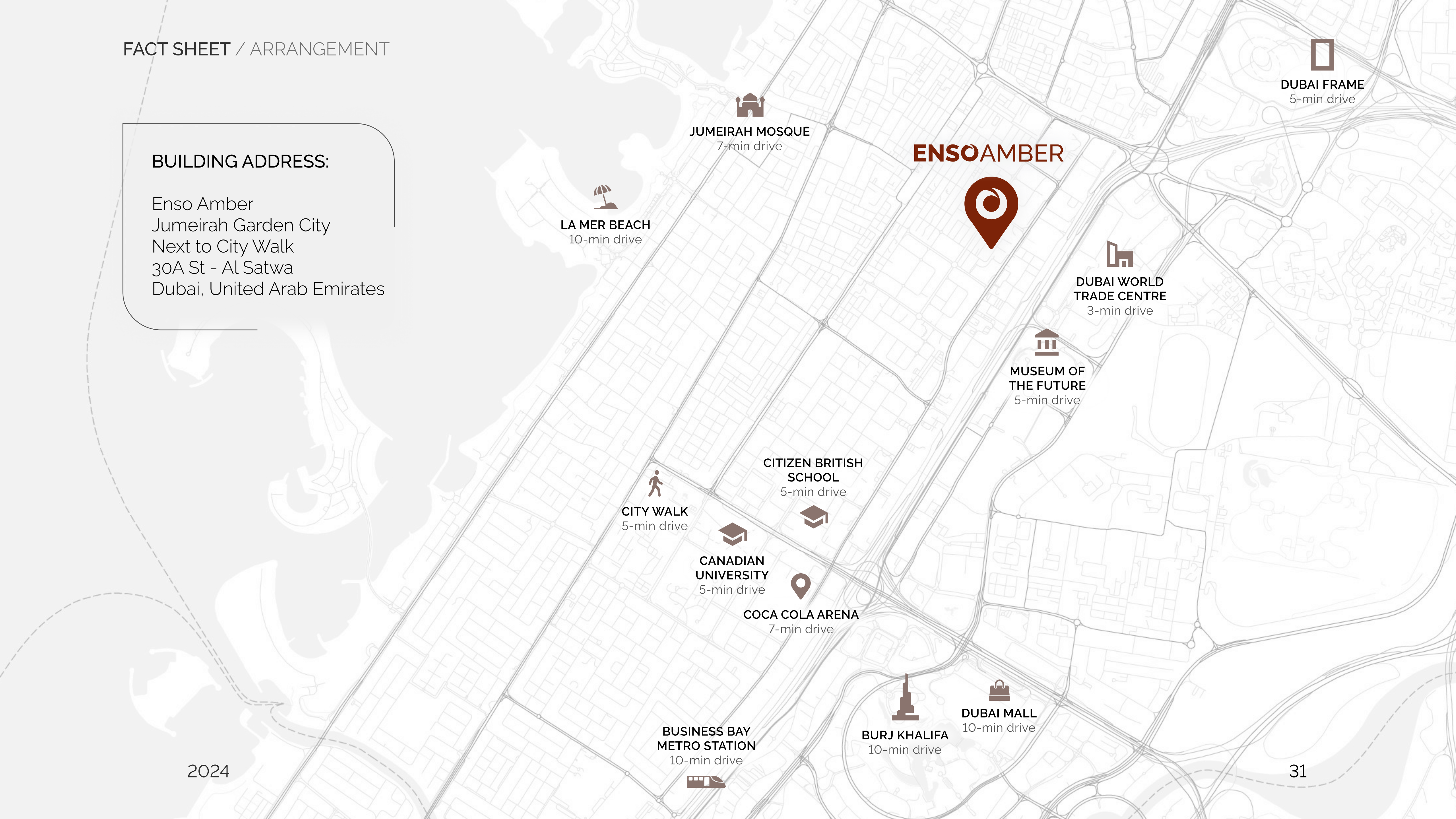
ENSO AMBER AMENITIES

-  Swimming Pool
-  Kids' Pool
-  Indoor Children's Play Area
-  Electric Car Charging Station
-  BBQ Lawns
-  Indoor Gym
-  Outdoor Gym
-  Outdoor Children's Play Area
-  Zen Garden
-  Meditation Zone



BUILDING ADDRESS:

Enso Amber
Jumeirah Garden City
Next to City Walk
30A St - Al Satwa
Dubai, United Arab Emirates



www.enso.inc